

Canon T5i Quick Training

Top and Back View

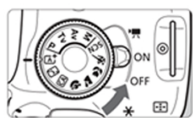


Front and Side View



Start Up

Turning on the Power



- <M> : The camera turns on. You can shoot movies
- <ON> : The camera turns on. You can shoot still photos.
- <OFF> : The camera is turned off and does not operate. Set to this position when not using the camera.

Basic Modes



All the settings necessary for shooting are set automatically. You just press the shutter button, and the camera does the rest.

- | | |
|---|--|
| <ul style="list-style-type: none"> Scene Intelligent Auto Flash Off Creative Auto Portrait Landscape Close-up | <ul style="list-style-type: none"> Sports SCN Special scene Night Portrait Handheld Night Scene HDR Backlight Control |
|---|--|

At the SCN position, press the <Q> button, select the shooting mode icon with <M> key, and turn the <M> dial to set the shooting mode.

Canon T5i Quick Training

Menu Operations



1. Press the <MENU> button to display the menu.
2. Press the <◀▶> key to select a tab, then press the <▲▼> key to select the desired item.
3. Press <SET> to display the setting.
4. After setting the item, press <SET>.

Live View Shooting

You can shoot while viewing the image on the LCD monitor. This is called "Live View shooting".



1 Display the Live View image on the LCD monitor.

- Press the <CAM> button.
- ▶ The Live View image will appear on the LCD monitor.



2 Focus the subject.

- Press the shutter button halfway to focus.
- ▶ When focus is achieved, the AF point will turn green and the beeper will sound.



3 Take the picture.

- Press the shutter button completely.
- ▶ The picture will be taken and the captured image is displayed on the LCD monitor.
- ▶ After the image review ends, the camera will return to Live View shooting automatically.
- Press the <CAM> button to end the Live View shooting.

You can also rotate the LCD monitor in different directions.



Normal angle



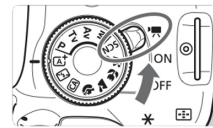
Low angle



High angle

Shooting Video

When the shooting mode is not set to <M>, autoexposure control will take effect to suit the scene's current brightness.

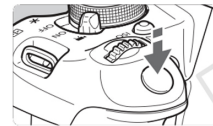


1 Set the power switch to <ON>.

- ▶ The reflex mirror will make a sound, then the image will appear on the LCD monitor.

2 Set the shooting mode.

- Set the Mode Dial to any shooting mode except <M>.



3 Focus the subject.

- Before shooting a movie, focus with AF or manual focus (p.159-167, 170).
- By default, [Movie Servo AF: Enable] is set so that the camera will always focus. To stop Movie Servo AF, see page 196.



Recording movie



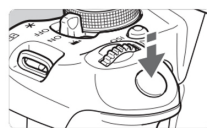
Microphone

4 Shoot the movie.

- Press the <CAM> button to start shooting a movie. To stop movie shooting, press <CAM> again.
- ▶ While the movie is being shot, the "●" mark will be displayed on the upper right of the screen.

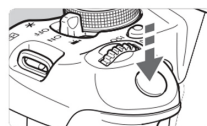
Shutter Button

The shutter button has two steps. You can press the shutter button halfway. Then you can further press the shutter button completely.



Pressing halfway

This activates autofocus and the automatic exposure system that sets the shutter speed and aperture. The exposure setting (shutter speed and aperture) is displayed in the viewfinder (⦿4).



Pressing completely

This releases the shutter and takes the picture.

Preventing Camera Shake

Hand-held camera movement during the moment of exposure is called camera shake. It can cause blurred pictures. To prevent camera shake, note the following:

- Hold and steady the camera as shown on the preceding page.
- Press the shutter button halfway to autofocus, then slowly press the shutter button completely.

Canon T5i Quick Training

▶ Image Playback

The easiest way to play back images is explained below. For more details on the playback procedure.



1 Play back the image.

- Press the <▶> button.
- ▶ The last captured image or last image viewed will appear.



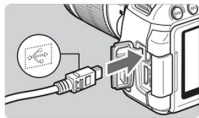
2 Select an image.

- To view images starting with the last image, press the <◀> key. To view images starting with the first (oldest) image, press the <▶> key.
- Each time you press the <INFO.> button, the display format will change.

Downloading Images to a Personal Computer

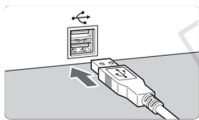
You can use the provided software to download the images in the camera to your personal computer. There are two ways to do this.

Download by Connecting the Camera to the Personal Computer



1 Use the provided interface cable to connect the camera to your personal computer.

- Use the interface cable provided with the camera.
- Connect the cable to the camera's <DIGITAL> terminal with the cable plug's <←> icon facing the front of the camera.
- Connect the cord's plug to the personal computer's USB terminal.



2 Use EOS Utility to download the images/movies.

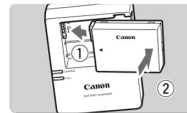
- For details, refer to the Software Instruction Manual on the CD-ROM

Charging the Battery



Open the cover and remove the battery.

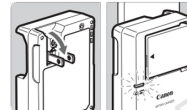
- Press the battery release lever as shown by the arrow and remove the battery.
- To prevent short circuiting of the battery contacts, be sure to attach the protective cover to the battery.



Attach the battery.

- As shown in the illustration, attach the battery securely to the charger.
- To detach the battery, follow the above procedure in reverse.

LC-E8

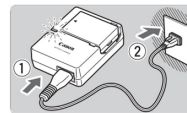


Recharge the battery.

For LC-E8

- As shown by the arrow, flip out the battery charger's prongs and insert the prongs into a power outlet.

LC-E8E



For LC-E8E

- Connect the power cord to the charger and insert the plug into a power outlet.
- ▶ Recharging starts automatically and the charge lamp lights up in orange.
- ▶ When the battery is fully recharged, the full-charge lamp will light up in green.